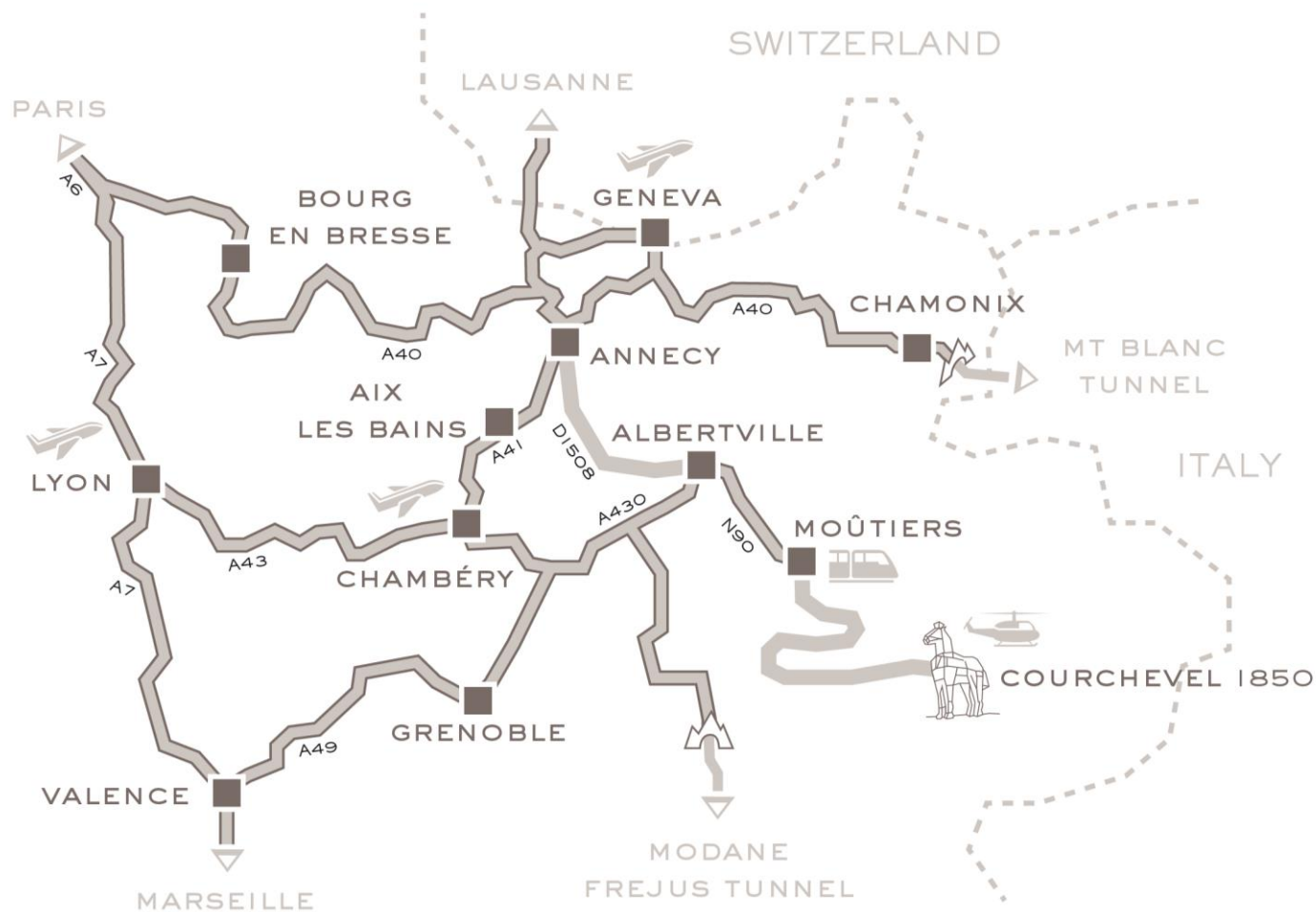




THE CHALET



BY TRAIN:

Paris - Moûtiers
By TGV: 4h15



BY PLANE:

Chambéry/Aix-les-Bains Airport at 110km
Geneva Cointrin Airport at 150km
Lyon Saint-Exupéry Airport at 190km
Helicopter Transfer Service
Available to Courchevel Altiport



BY CAR:

A43/A430 Motorway
Then N90 Road to Moûtiers and
D195/194 to Courchevel 1850

CHEVAL BLANC COURCHEVEL CHALET

The ski-in, ski-out three-bedroom Chalet sprawls over 315 sqm – 3390 sqft. Cleverly combining authentic mountain materials with original art pieces, interior designer Sybille de Margerie conceived this Alpine jewel for friends and families seeking a private and exclusive mountain experience.

The ground floor comprises a spacious bedroom lined in grey brushed oak, with floor-to-ceiling windows opening onto a private terrace and garden with comfortable loungers to enjoy the mountain air. The adjoining walk-in dressing room leads to a generous Zebrano marble bathroom, naturally veined with the Maison's signature taupe colour, where guests can unwind in the chromotherapy hammam shower or experience deep relaxation in the oversized bathtub. The Chalet boasts numerous well-being sanctuaries from a winter terrace with a Nordic bath, sauna, hammam or a private spa treatment room offering an in-Chalet experience of the Cheval Blanc Spa's signature treatments created with Guerlain. Chalet guests can also enjoy a dedicated, state-of-the-art cinema room – ideal for entertainment on snowy days or cosy evenings.

On the first floor, the second bedroom is decorated in shades of soothing grey and warm reds with views over the slopes. An en-suite bathroom with a chromotherapy hammam and a large walk-in dressing room and a spacious living area with panoramic south and west views over the Trois Vallées mountains complete this grand room. On the same floor, convivial living areas offer a dining area with an eight-seat round table, or a high-design living room with plush sofas for après-ski relaxation. Here, guests may curl up with a delicious hot chocolate in front of the crackling fireplace, watch their favourite movie or peruse a novel from the Chalet's private library. A panoramic balcony runs along this floor's façade offering stunning southwest mountain views.

The top floor of the Chalet is dedicated to the sumptuous master suite. Decorated in tones of warm gold and elegant black, the bedroom features a cosy living room, complete with a private bar and balcony. Double independent dressing rooms provide generous priming areas while the master bathroom with an oversized double bathtub and hammam shower invite to pure relaxation. For absolute comfort, the Chalet's entertainment, temperature and lighting systems are controlled by a tablet.

*Cheval Blanc Courchevel,
an alpine haven*



*A ski-in, ski-out 3 bedroom private chalet
with direct access to the Maison's facilities*

315 sqm - 3390 sqft





*Master suite on the top floor,
boasting vivid mountain views*



*Generous master bathroom
with an oversized bathtub*

*Second bedroom on the first floor
with lush alpine views*





*A third bedroom on the ground floor,
with high-design accents*

*A convivial dining and living area
with a rotating fireplace*





*A private screening room
for silver-screen gatherings*



*Charming design details
celebrating delicate artisanship*



*Private treatment room
featuring Guerlain rituals*

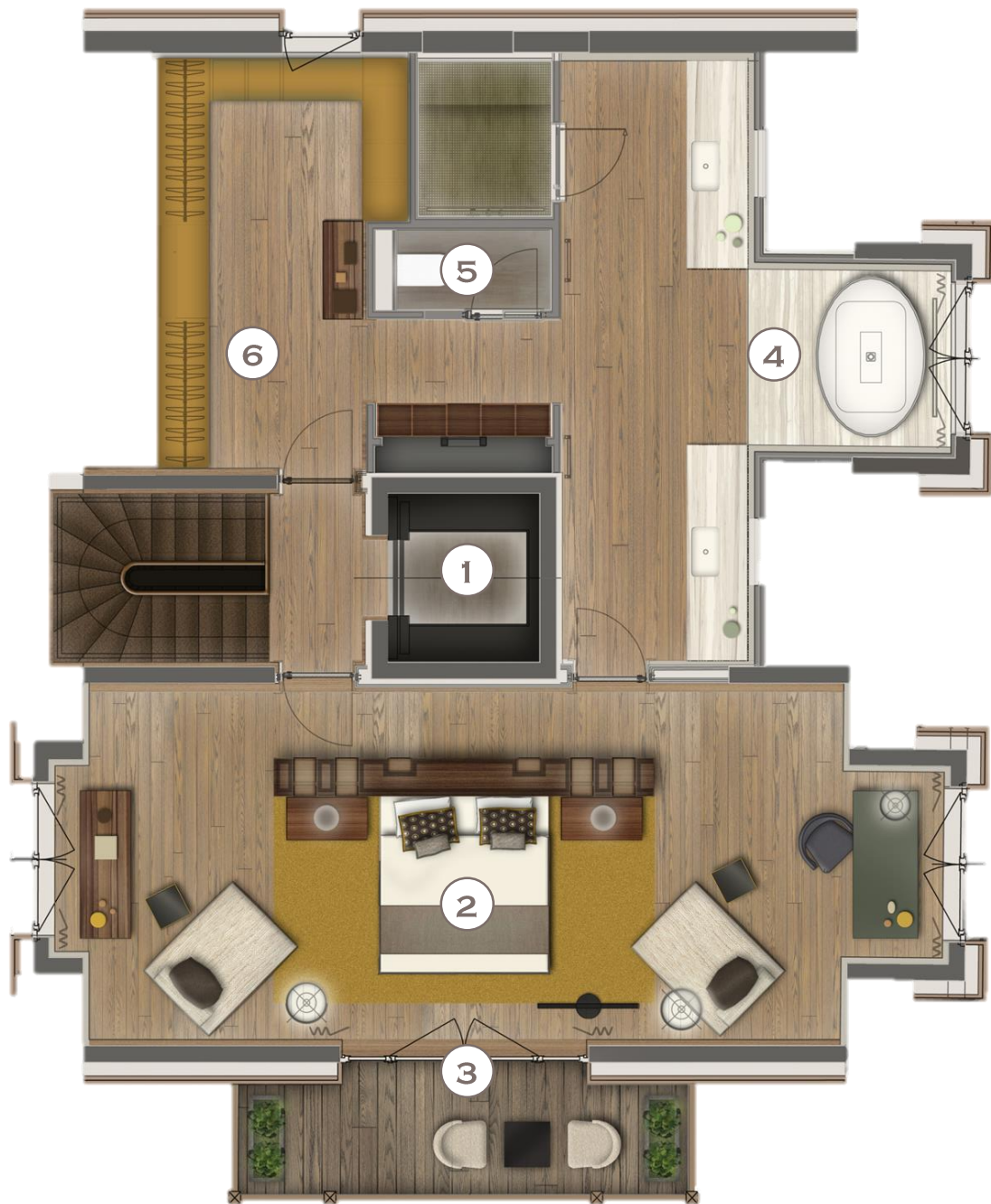


*Nordic bath for ultimate
mountain relaxation*

THE CHALET | FACILITIES OVERVIEW

- Independent, ski-in, ski-out three-bedroom Chalet sprawling across 315 sqm – 3390 sqft on four floors including:
 - 2 large suites on independent floors with a large lounge and desk area, bathrooms with bathtubs and separate hammam showers equipped with light therapy and spacious dressing rooms
 - 1 master suite on the top floor with a generous lounge and desk area, a bathroom with double bathtub and double hammam shower equipped with light therapy and a double dressing room and make-up area
 - Private screening room
 - Outdoor terrace with relaxation area and Nordic bath
 - Lavish dining area and a convivial living room with a fireplace
 - Private spa treatment room showcasing exclusive Guerlain rituals
- iPad controlled lighting, climate and entertainment systems
- Dedicated lift
- Dedicated Ambassadeur access and facilities

- Direct access to the Maison's outlets and facilities including:
 - Cheval Blanc's signature restaurants Le Triptyque and three Michelin-starred Le 1947 at Cheval Blanc, Le Bar and Cigar Lounge
 - Le Carrousel kids' club and Le Paddock teens' club
 - Cheval Blanc Spa with Guerlain treatments, Hair Room Service by John Nollet
 - Fitness centre and swimming pool
 - Ski Service
 - Louis Vuitton boutique



TOP FLOOR

1. PRIVATE LIFT
2. MASTER SUITE
3. BALCONY
4. BATHROOM
WITH BATHTUB
AND HAMMAM SHOWER
5. TOILET ROOM
6. DOUBLE DRESSING
ROOM AND VANITY



FIRST FLOOR

1. PRIVATE LIFT
2. DINING AREA
3. FIREPLACE LOUNGE
4. TERRACE
5. LIVING ROOM
6. BALCONIES
7. SECOND BEDROOM
8. TOILET ROOM
9. BATHROOM
WITH BATHTUB
AND HAMMAM SHOWER
10. DRESSING ROOM
11. OUTSIDE ACCESS
TO THE MAISON



GROUND FLOOR

1. PRIVATE LIFT
2. TOILET ROOM
3. PRIVATE
SCREENING ROOM
4. SPA TREATMENT ROOM
5. SPA RELAXATION AREAS
6. HAMMAM AND SAUNA
7. TERRACE
WITH NORDIC BATH
8. THIRD BEDROOM
9. DRESSING ROOM
10. TOILET ROOM
11. BATHROOM
WITH BATHTUB
AND HAMMAM SHOWER



Le 1947 at Cheval Blanc
by Yannick Alléno
Three-Michelin-starred restaurant



*Le Triptyque, contemporary brasserie
designed by Peter Marino*



*The Cheval Blanc Spa offering
exclusive treatments by Guerlain*

*Tailored experiences
to discover the secrets of the Alps*



CHEVAL BLANC COURCHEVEL

Le Jardin Alpin. 73120 Courchevel 1850. France

Tel: +33 (0)4 79 00 50 50 - Fax: +33 (0)4 79 00 50 51

Website: www.chevalblanc.com - Email: info.courchevel@chevalblanc.com