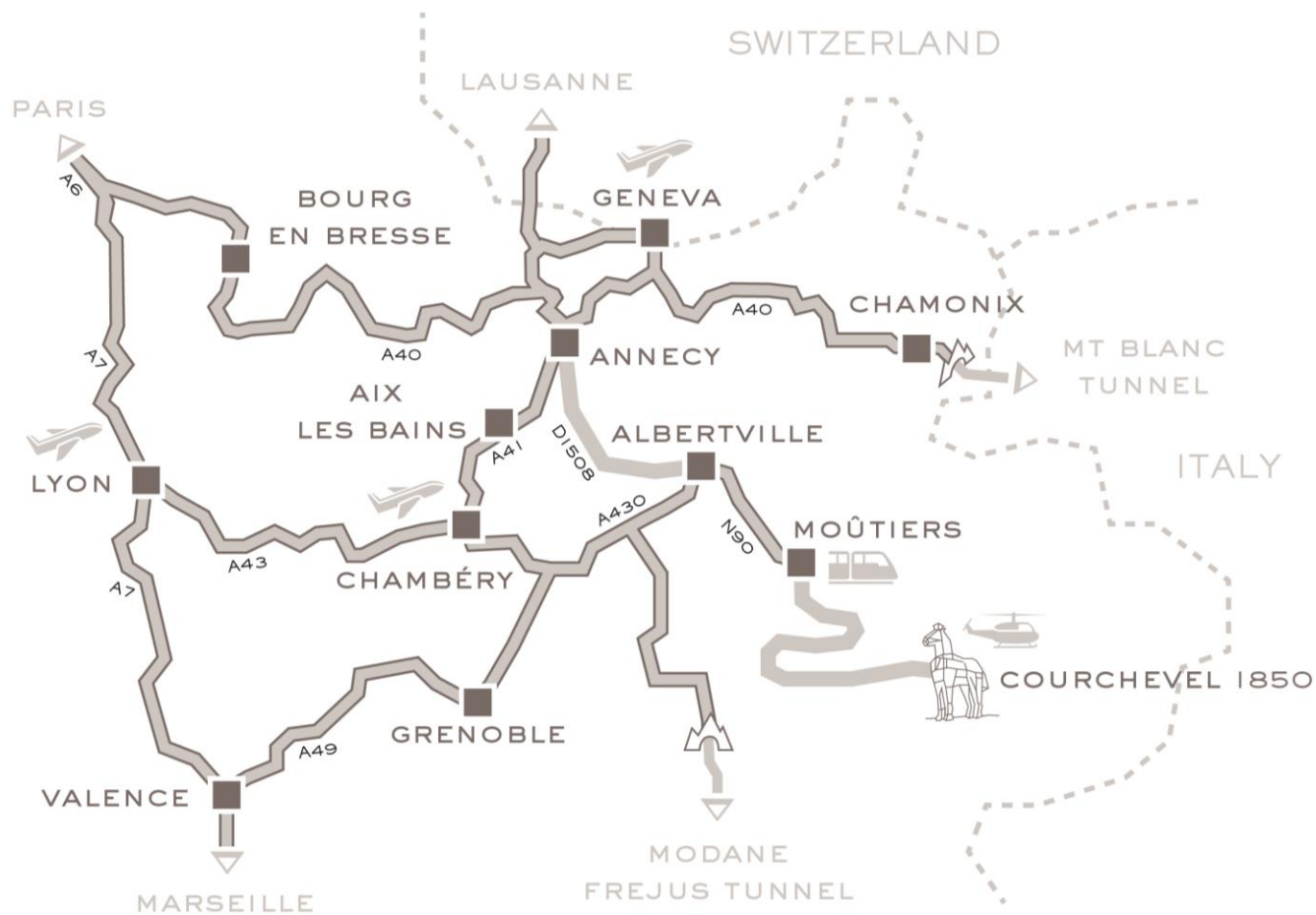


LVMH  
HOTEL MANAGEMENT



CHEVAL BLANC

COURCHEVEL



**BY TRAIN :**  
Paris-Moûtiers  
by TGV : 4h15



**BY PLANE :**  
Chambéry/Aix les Bains airport at 110km  
Geneva Cointrin airport at 150km  
Lyon Saint-Exupéry airport at 190km



Helicopter transfer service  
available to Courchevel altiport



**BY CAR :**  
A43/A430 motorway,  
then N90 road to Moûtiers and D195/194  
to Courchevel 1850



*Cheval Blanc Courchevel,  
an intimate, contemporary haven at altitude*



CHEVAL BLANC

---

*142 Ambassadeurs  
for 36 rooms*

---



---

*A veritable living gallery  
with delightful works of art*

---

---

*Superior Room*  
40 to 42 SQM

---





---

*Junior Suite*  
50 to 62 SQM

---





*Vibrant design  
by Sybille de Margerie*



---

*Delightful details  
in luxuriant materials*

---



*Suites*  
70 to 105 SQM

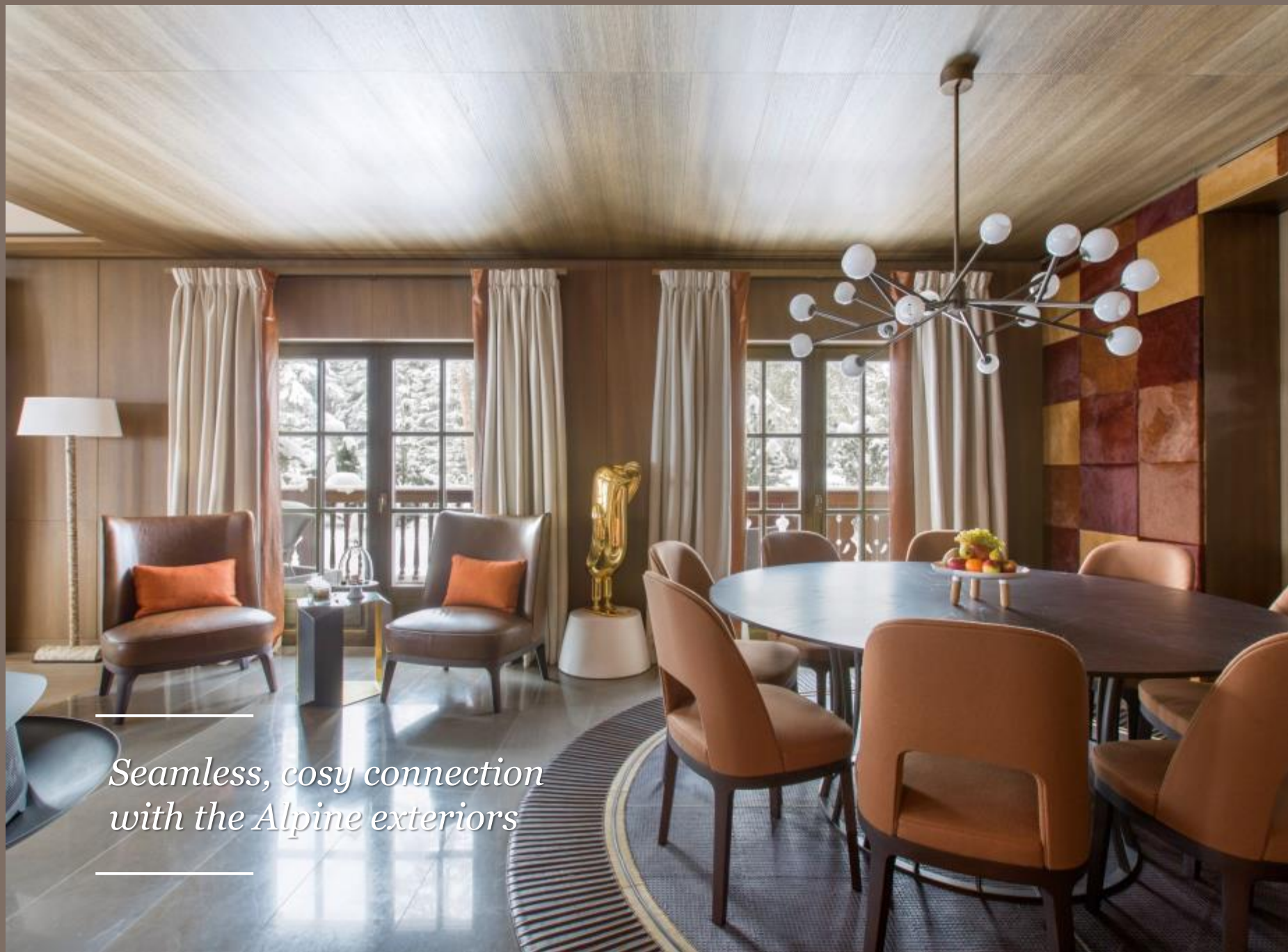
---

## *The Chalet*

3 bedrooms - 315 sqm - 3390 sqft  
With direct access to the Maison

---





*Seamless, cosy connection  
with the Alpine exteriors*



---

*A private screening room  
for silver-screen gatherings*

---

A double bathroom with a central white bathtub on a raised platform. Two yellow vanity units with white marble countertops and round mirrors are on either side. Two white penguin figurines are placed in the room. The room has a vaulted ceiling and a window with light-colored curtains. The floor is made of light-colored stone tiles.

*Double bathroom for  
ultimate relaxation*



*Exclusive outdoor spaces for  
après-ski indulgence*





*The Apartment*

4 bedrooms - 650 sqm - 7150 sqft



---

*Le 1947 at Cheval Blanc  
by Yannick Alléno  
Three-Michelin-starred restaurant*

---



---

*Le Restaurant de Cheval Blanc Courchevel, contemporary brasserie  
designed by Peter Marino*

---



---

*La Table de Partage  
private dining room*

---



*Le Bar, for festive fireside interludes*



*Authentic Mongolian Cigar Yurt  
for cigar and spirit connoisseurs*

The image shows a sophisticated spa interior. A central stone fireplace with a shimmering metallic screen is the focal point. To the left, a white vanity counter holds various beauty products. In the center, a light-colored sofa and ottoman are arranged on a grey rug. To the right, a long, dark console table displays several Guerlain perfume bottles. The walls are finished with light wood paneling, and the floor is made of light wood. The lighting is warm and ambient, with recessed ceiling lights and wall sconces.

*The Cheval Blanc Spa offering  
exclusive treatments by Guerlain*

A large, modern indoor pool area with a jacuzzi. The space is illuminated with blue ambient lighting. The walls feature a mix of stone and white textured panels. There are several lounge chairs and a blue ottoman on the left side. The ceiling has recessed lighting and a blue glow. The pool is surrounded by a white deck and has a blue light strip along the edge. The jacuzzi is visible on the right side.

*Stunning indoor pool  
with an adjoining Jacuzzi*





*A Russian banya for a relaxing escape  
upon returning from the slopes*



*Le Carrousel  
kids' club*



*Le Paddock  
teens' club*



*Unequaled skiing experience  
in the world's largest ski domain*



CHEVAL BLANC  
COURCHEVEL

*Tailored experiences  
to discover the secrets of the Alps*



LVMH  
HOTEL MANAGEMENT